

OnLaneALERT™ VDC2 PARAMETER UPDATE

TECHNICAL BULLETIN



WABCO

Table of Contents

1	General Information	4
2	Safety Information.....	6
3	Description and Function.....	7
4	Camera Parameter Update	8
5	Procedures	9
5.1	Installing the OnLaneALERT™ VDC3 Flash Tool Software onto a Laptop	9
5.2	Running the Parameter Update Software	10

EN 1 General Information

Symbols used in this document

DANGER

Description of an immediate situation which will result in irreversible injury or death if the warning is ignored.

WARNING

Description of a possible situation which may result in irreversible injury or death if the warning is ignored.

CAUTION

Description of a possible situation which may result in irreversible injury if the warning is ignored.

NOTICE

Description of a possible situation which may result in material damage if the warning is ignored.



Important information, notes and/or tips.



Reference to information on the internet

1. Action step

- Action step
- ⇒ Consequence of an action

■ List

- List

Note on the use of a tool/WABCO tool

How to Obtain Additional Maintenance, Service and Product Information

For more information about OnLaneALERT™, refer to Maintenance Manual MM1814, OnLaneALERT™ Lane Departure Warning (LDW) System and SP18005, OnLane Driver Tips. If you have any questions about the material covered in this publication, or for more information about the WABCO product line, please contact WABCO Customer Care Center at 855-228-3203, by email at wncustomercenter@wabco-auto.com, or visit our website: www.wabco-na.com. Please read all information to properly operate the system and be aware of the situations in which this system may not provide full assistance.

General Information

WABCO Academy



<https://www.wabco-academy.com/home/>

EN

WABCO online product catalog



<http://inform.wabco-auto.com/>

Your direct contact to WABCO

**WABCO NORTH AMERICA
WABCO USA LLC
1220 PACIFIC DRIVE
AUBURN HILLS, MI 48326
CUSTOMER CARE CENTER: (855) 228-3203
WWW.WABCO-AUTO.COM**

EN 2 Safety Information

Provisions for a safe work environment

- Only trained and qualified technicians may carry out work on the vehicle.
- Read this publication carefully.
- Follow all warnings, notices and instructions to avoid personal injury and property damage.
- Always abide by the vehicle manufacturer's specifications and instructions.
- Observe all accident regulations of the respective company as well as regional and national regulations.
- The workplace should be dry, sufficiently lit and ventilated.
- Use personal protective equipment if required (safety shoes, protective goggles, respiratory protection and ear protectors).

Read and observe all Danger, Warning and Caution hazard alert messages in this publication. They provide information that can help prevent serious personal injury, damage to components, or both.

WARNING

To prevent serious eye injury, always wear safe eye protection when you perform vehicle maintenance or service.

WARNING

Park the vehicle on a level surface. Block the wheels to prevent the vehicle from moving. Support the vehicle with safety stands. Do not work under a vehicle supported only by jacks. Jacks can slip or fall over. Serious personal injury and damage to components can result.

3 Description and Function

The OnLaneALERT™ Lane Departure Warning (LDW) System is a camera-based warning system designed to help drivers avoid unintentional lane changes. The LDW system utilizes a camera mounted near the upper center of the windshield that observes the vehicle's position in its lane. In the event of an unintentional lane change, the system alerts the operator by sounding audible warnings through a set of speakers.

The system operates automatically when the vehicle is moving on a roadway with painted lane markings. It identifies intentional lane changes by monitoring the turn signals, brake switch and vehicle speed.

OnLaneALERT™ is designed, manufactured and installed as a driver assistance system. It is not intended to replace good attentive driving behaviors which can be affected by traffic and road conditions.

Camera Parameter Update

A camera parameter update has been created to eliminate a VDC2 timeout fault (SPN 1808 FMI 09) on vehicles built with OnLaneALERT™, but NOT equipped with WABCO SmartTrac Stability Control.

5 Procedures

This update requires installation of the OnLaneALERT™ VDC2 Flash Tool. This flash tool must be downloaded from our website, www.wabco-na.com. After downloading the programming tool, follow the steps to install it on a laptop. Once it is installed, run the update to change the parameter.

5.1 Installing the OnLaneALERT™ VDC2 Flash Tool Software onto a Laptop

An internet connection is required to obtain the OnLaneALERT™ VDC2 Flash Tool software. The software must be downloaded from wabco-na.com website to a laptop. Once the software has been downloaded, it must be unzipped ("Extracted") to a known location; we recommend your "Desktop".



NOTE: It will not be necessary to download the OnLaneALERT™ VDC2 Flash Tool software for each vehicle that is updated. Once you have the software on your laptop, just click on the desktop folder and run the OnLaneALERT™ Flash Tool software for each vehicle you need to update.

1. Using a web browser, navigate to wabco-na.com to download the OnLaneALERT VDC2 Flash Tool.



NOTE: Before downloading and running the OnLaneALERT VDC2 Flash Tool, please close all unnecessary programs or windows.

2. When the WABCO home page has loaded, cursor over the "Downloads" heading near the top of the page. From the drop-down menu, select OnLaneALERT VDC2 Flash Tool.



NOTE: Depending on your computer and operating system, the process may vary, but the steps herein should work for most users.

3. When prompted to open or save the files, select "Save as" and save the files to your desktop (recommended), or your desired "location".
4. After the OnLaneALERT VDC2 Flash Tool finishes the download to your location, double-click on the new zip file or "right" click on the file and select "Open with WinZip".
5. Click on "Extract", then select your location as the "Extract to" location and click "Extract". A new folder will appear at your location labeled "OnLaneALERT VDC2 Flash Tool".
6. Double-click on the new "OnLaneALERT VDC2 Flash Tool" folder.

The folder will contain three files and this technical bulletin:

- Adapter_Selection.exe
- J1939Diag_UDS.dll
- OnLaneALERT VDC2 Flash Tool



NOTE: The files in the folder must appear in this exact format.

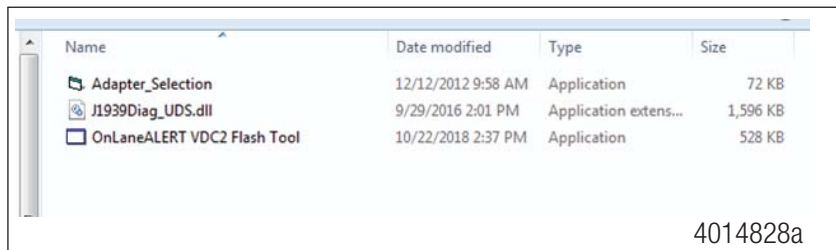
5.2 Running the Parameter Update Software



NOTE: To expedite the update, WABCO recommends that you update the device drivers of your interface device via the manufacturer's website before proceeding. The update process should take less than 10 minutes.

1. Connect the computer to the vehicle's SAE J1939-13 Off-Board Diagnostic Connector using a diagnostic interface with the ignition key on.
2. Navigate to the "OnLaneALERT VDC2 Flash Tool" folder containing the unzipped update files. Run the program file by double-clicking on "OnLaneALERT VDC2 Flash Tool" file. Figure 1.

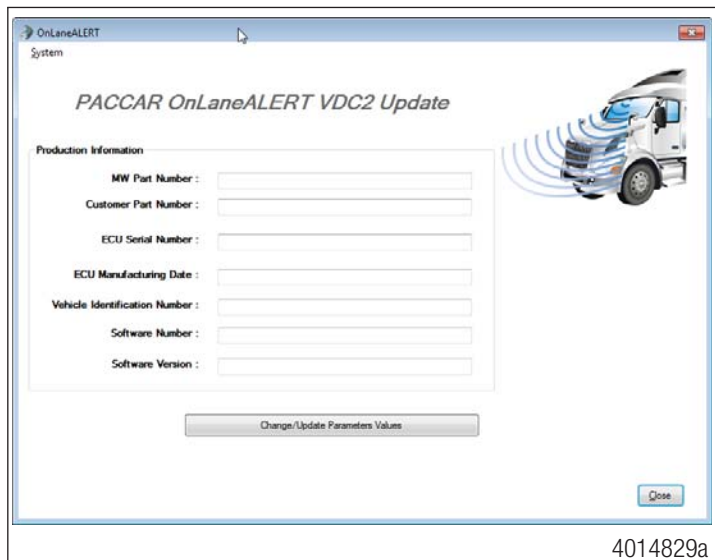
Fig. 1



A window will be displayed when the application is launched.

3. Select "Change/Update Parameters Values". Figure 2.

Fig. 2



The update will begin.

If the tool is unable to connect to the vehicle, an adapter message will be displayed. There may be an issue with the adapter settings. Perform the following steps to connect to the vehicle.

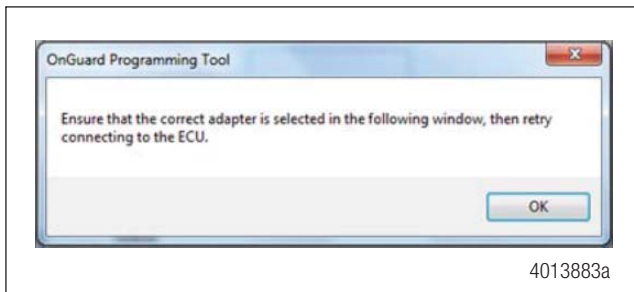
- A. Click "OK" in the following window. Figure 3.

Fig. 3



- B. Select "OK" in the following window. Figure 4.

Fig. 4



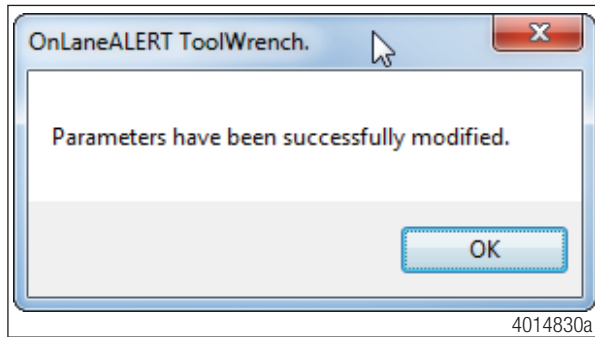
- C. Select the correct Vendor, Protocol and Adapter being used from the list and select "OK". Figure 5.

Fig. 5



4. Once the process is finished, a message will be displayed indicating that the "OnLaneALERT VDC2 Flash Tool" successfully completed the programming. Figure 6.

Fig. 6



Select "OK".

Installation of the update described in this Technical Bulletin is solely at your risk. Without limiting the foregoing, WABCO expressly disclaims all express and implied warranties related to the parameter, and shall not be liable to you or any third parties for any direct, indirect, consequential, or other damages, including loss of data, lost profits, personal injury or property damage, or other damages associated with your installation or use of the parameters, your failure to follow the procedures and instructions set forth in this Technical Bulletin or any subsequent instructions provided by WABCO, your failure to obtain the parameter from an authorized WABCO-designated website, your failure to install any recommended updates, or any other damages attributable to your acts or omissions.



WABCO
a **WORLD** of
DIFFERENCE

WABCO (NYSE: WBC) is a leading global supplier of technologies and services that improve the safety, efficiency and connectivity of commercial vehicles. Originating from the Westinghouse Air Brake Company founded nearly 150 years ago, WABCO continues to pioneer breakthrough innovations to enable autonomous driving in the commercial vehicle industry. Today, leading truck, bus and trailer brands worldwide rely on WABCO's differentiating technologies, including advanced driver assis-

tance, braking, steering and stability control systems. Powered by its vision for accident-free driving and greener transportation solutions, WABCO is also at the forefront of advanced fleet management systems that contribute to commercial fleet efficiency. In 2017, WABCO reported sales of \$3.3 billion and has nearly 15,000 employees in 40 countries. For more information, visit

www.wabco-na.com

WABCO